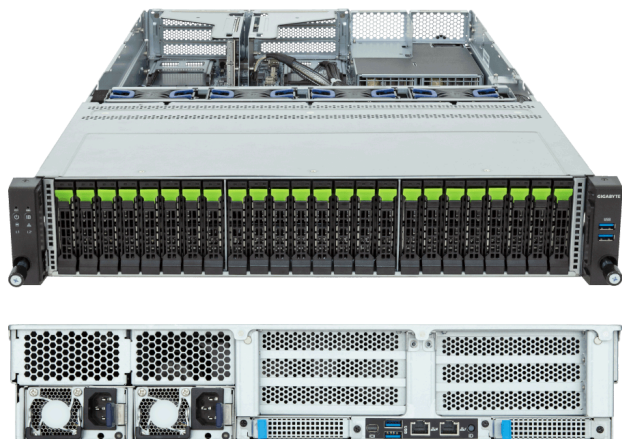


R263-Z36-AAE1 (Rev. 3.x)

Rack Server - AMD EPYC™ 9005/9004 Server Processors -
2U UP 24-Bay Gen5 NVMe Platinum



Key Features

- Single AMD EPYC™ 9005/9004 Server Processors
- 12-Channel DDR5 RDIMM per CPU with 12 x DIMMs
- 1 x 1 Gb/s LAN port via Intel® I210-AT
- 24 x 2.5" Gen5 NVMe hot-swap bays
- 1 x M.2 slot with PCIe Gen3 x4
- 1 x FHHL PCIe x16 slot with Gen5 x16 lanes
- 1 x OCP NIC 3.0 PCIe Gen5 x16 slot
- Compatible with SupremeRAID™ by Graid Technology
- 1+1 2000 W 80 PLUS Platinum redundant power supplies

Applications

Networks Server, Servers for Hybrid/Private Cloud...

Specification

Dimensions	2U (W438 x H87.5 x D710 mm)	PCIe Expansion Slots	1 x FHHL x16 (Gen5 x16) 1 x OCP NIC 3.0 (Gen5 x16), Support NCSI
Motherboard	MZ33-DC1	I/O Ports	Front: 2 x USB 3.2 Gen1 Rear: 2 x USB 3.2 Gen1, 1 x Mini-DP, 1 x RJ45, 1 x MLAN
CPU	AMD EPYC™ 9005 Server Processors AMD EPYC™ 9004 Server Processors Single processor - cTDP up to 400 W (-ACE1) [1] - cTDP up to 500 W (-ADE1) [1] Supports cTDP up to 500 W at 25°C ambient.	Backplane Board	PCIe Gen5 x4
OS Compatibility	OS Support List	TPM	1 x TPM header (SPI), Optional TPM 2.0 kit: CTM012
Socket	1 x LGA 6096 (Socket SP5)	Power Supply	1+1 2000 W 80 PLUS Platinum redundant power supplies AC Input: 100-240 V
Chipset	System on Chip	System Management	ASPEED® AST2600 Baseboard Management Controller GIGABYTE Management Console web interface
Memory	12-Channel DDR5 RDIMM, 12 x DIMMs [EPYC 9005] Up to 6400 MT/s [EPYC 9004] Up to 4800 MT/s	System Fans	4 x 80x80x38mm
LAN	1 x 1 Gb/s LAN (1 x Intel® I210-AT), Support NCSI 1 x 10/100/1000 Mb/s Management LAN	Operating Properties	Operating: 10°C to 30°C, 8% to 80% (non-condensing) Non-operating: -40°C to 60°C, 20% to 95% (non-condensing)
Video	Integrated in ASPEED® AST2600 - 1 x Mini-DP	Packaging Content	1 x R263-Z36-AAE1 1 x CPU heatsink 1 x Mini-DP to D-Sub cable 1 x 2-Section Rail kit
Storage	Front hot-swap: 24 x 2.5" Gen5 NVMe [1] Internal M.2: 1 x M.2 (2280/22110), PCIe Gen3 x4 [1] NVMe supported only.	Ordering Part Numbers	Up to 400 W CPU: 6NR263Z36DR000ACE1* Up to 500 W CPU: 6NR263Z36DR000ADE1*
RAID	Require RAID add-in cards Optional compatible RAID Cards: NVMe/NVMe-oF RAID Cards with SupremeRAID™ by Graid Technology RAID Card models: SR-1000-FD32, SR-1010-FD32 Support RAID 0/1/5/6/10	Optional Parts	- RAID card (SR-1000-FD32): 25FC1-SRBUN0-AFS - RAID card (SR-1010-FD32): 25FC1-SRBUN4-AFR - 3-Section Rail kit (Supports CMA): 25HB2-A56120-K0R - Cable Management Arm: 25HBZ-R18100-K0R



Learn more at: <https://www.gigabyte.com/Enterprise>

* All specifications are subject to change without notice. Please visit our website for the latest information.

* All trademarks and logos are the properties of their respective holders.

© 2026 Giga Computing Technology Co., Ltd. All rights reserved.

Last updated: Jun 22, 2026

Designed by

